

**Tissue-Tek Prisma®**  
H&E Stain Kit #1


**Optimized staining system  
for higher throughput**



continuous innovation for pathology





A high-magnification histological slide showing a cross-section of tissue. A central, elongated, and somewhat irregularly shaped area is filled with numerous small, round, red-stained cells, likely erythrocytes, arranged in a somewhat organized pattern. This central area is surrounded by a dense, purple-stained tissue matrix, which appears to be composed of elongated, spindle-shaped cells, possibly fibroblasts or smooth muscle cells, arranged in a somewhat organized pattern. The overall appearance is that of a blood vessel or a similar structure within a tissue section.

---

## Experience the power of a staining system

Sakura Finetek presents the first H&E Kit that stains  
up to 2,500 slides at up to 530 per hour. \*



# The complete staining solution from one trusted supplier

The Tissue-Tek Prisma H&E Stain Kit #1 is the first and only H&E Kit specifically developed for your Tissue-Tek Prisma stainer. It provides high quality and consistent staining for up to 2,500 slides per Kit delivered at a throughput up to 530 slides per hour.

Meeting the requirements to produce stained slides every day is a laboratory's biggest challenge. Delivering those slides during peak demand hours is stressful and requires a superior stain and a fast, reliable automated slide stainer. Laboratories want to ensure that the quality of the first rack of stained slides is of equal quality to the last rack.

Why not change the routine. Streamline and standardize your staining process by taking a system approach to produce slides faster than ever before. No more measuring out reagents, just pour and start staining. No more topping off stain reservoirs to get through each day. Get slides to your pathologist earlier when using the validated, optimized staining protocol from Sakura Finetek.

Change the way you work today!

Image 1:

Ovary tissue processed on Tissue-Tek® VIP 6 AI

Section stained with the Tissue-Tek Prisma® H&E Stain Kit #1

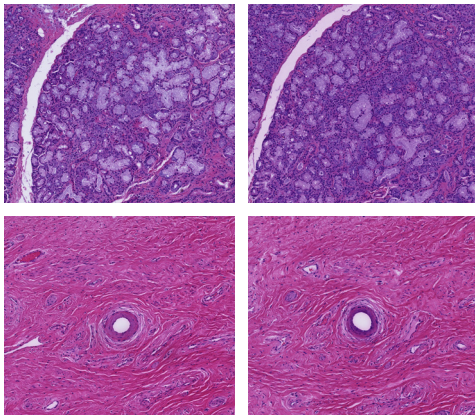
Blood vessels show a three-tone effect differentiating between erythrocytes, muscle cytoplasm and collagen

\* Configuration-dependent, based on the factory-validated IFU#1 Configuration and Protocol



## The Kit designed for Tissue-Tek Prisma Stainers

- The ready-to-use Kit consists of 6 bottles (1 each Hematoxylin and Eosin, 2 each Differentiator and Bluing Reagent) eliminating the need to filter, measure, or dilute reagents while continuously maintaining the highest quality stain
- A single Kit can stain up to 2,500 slides or last for up to 8 days, reduces reagent exchanges, saves time and money
- The bottles were designed to match the recommended volume for standard Prisma solution stain reservoirs



First slide

Last slide

## Validated, highest quality staining

- The optimized staining protocol of this system means reproducible results that the pathologists demand from the first slide to the last slide
- This perfectly matched H&E Kit is stringently QC-tested to provide lot-to-lot stain consistency
- Only Biological Stain Commission-certified dyes are used in the manufacturing process to ensure the highest quality Kit components



## Convenient, safe and ergonomic bottles

- Patented, custom-designed bottle with ergonomic grips enables more secure handling to minimize spills
- Wide bottle opening makes fast and splash-free filling of solution reservoirs much easier
- Color-coded labels and bottle caps which match the colors of the factory-validated solution configurations of the Tissue-Tek Prisma® Plus help avoid filling errors



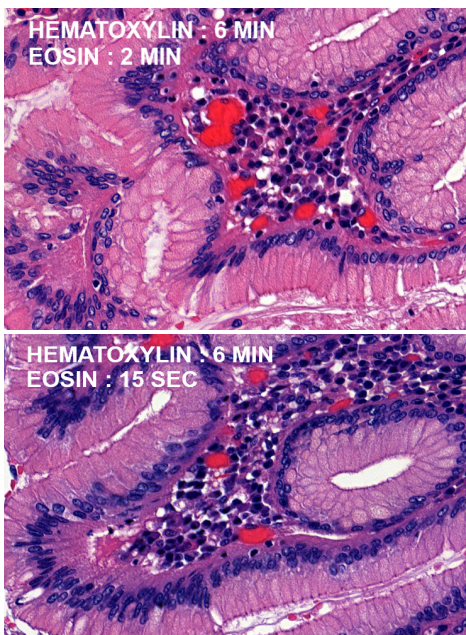
### Barcoded for tracking

- Each Kit and all its components are barcoded to enable scanning of their lot numbers and expiration dates for convenient documentation
- The new barcode reader on the Prisma *Plus* Stainer enables linking a basket of patient slides to a specific Stain Kit lot number easier
- Barcodes for 1,000 Kits are saved on the Prisma *Plus* Stainer to help comply with laboratory accreditation requirements



### Realize the power of our staining system

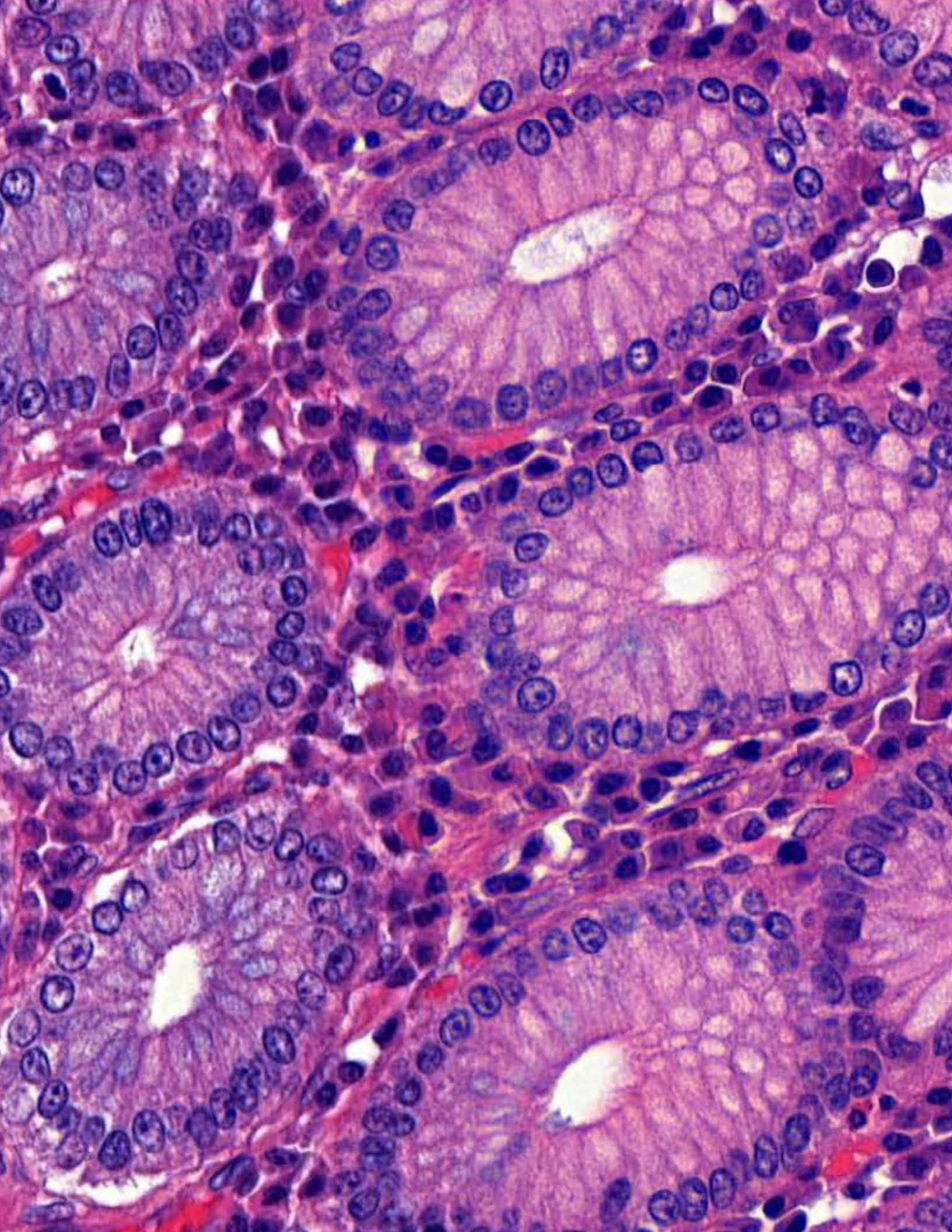
- The combination of Prisma H&E Stain Kit #1 and Prisma *Plus* Automated Slide Stainer create the fastest throughput of up to 530 slides per hour
- By adding and connecting the Prisma Slide Stainer to either a Tissue-Tek Film® or Tissue-Tek® Glas™ *g2* Coverslipper, create a true-walkaway system to further increase productivity
- The Prisma *Plus* open platform provides the ability to run additional PAP, IHC counterstaining, dewaxing, special stains or customized protocols to meet the needs of your laboratory



### Your desired stain is easy to find and shortens the time to validation

- Speed up the validation of your desired H&E protocol and leverage the web-based [Tissue-Tek Prisma Stain Grid](#) that helps you determine the best matching stain times for hematoxylin and eosin
- This is the only online H&E slide matching program created for you to view and compare slides stained using 4 tissue types (skin, ovary, lung, intestine) and 2 processing systems (Tissue-Tek VIP® 6 AI, and Tissue-Tek Xpress® x120)
- The Prisma *Plus* provides you with the factory-validated TRAIN protocol you can use to create your own protocol to best match your stain requirements by adjusting the stain times of the Kit components







## Specifications

<b>Product name</b>	Tissue-Tek Prisma® H&E Stain Kit #1
<b>Product code</b>	6190 *
<b>Components</b>	The Kit contains the following reagents: Hematoxylin, 1 bottle Eosin, 1 bottle ** Differentiator, 2 bottles *** Bluing Reagent, 2 bottles
<b>Volume</b>	750 mL per bottle of Hematoxylin, Differentiator, and Bluing Reagent 850 mL per bottle of Eosin
<b>Application</b>	Hematoxylin and eosin staining
<b>Stain capacity</b>	Up to 2,500 slides, protocol-dependent
<b>Slide requirements</b>	1 x 3 inches (25 x 75 mm)
<b>Validated stain protocol</b>	Tissue-Tek Prisma® Automated Slide Stainer and Tissue-Tek Prisma® <i>Plus</i> Automated Slide Stainer (Standard, Special Staining Configuration)
<b>Shelf life</b>	Unopened: 18 months from date of manufacture    Opened: 8 days

## Related items

Product code	Product name and quantity
6170	Tissue-Tek Prisma® <i>Plus</i> Automated Slide Stainer, Standard Configuration
6171	Tissue-Tek Prisma® <i>Plus</i> Automated Slide Stainer, Special Staining Configuration
6179	Tissue-Tek Prisma® <i>Plus</i> Barcode Reader
6130	Tissue-Tek Prisma® Automated Slide Stainer, Standard Configuration
6131	Tissue-Tek Prisma® Automated Slide Stainer, Special Staining Configuration
4740	Tissue-Tek Film® Automated Coverslipper
4770	Tissue-Tek® Coverslipping Film; 60 m/roll, 5 rolls/case
6500	Tissue-Tek® Glas™ <i>g2</i> Glass Coverslipper
6419	Tissue-Tek® Glas™ Mounting Medium; 1 bottle, 16 oz
6416	Tissue-Tek® Glas™ Coverslips 24 x 50 mm; 200/holder, 5 holders per/case

\* 6190 Kit ⚠️ WARNING: This product can expose you to chemicals including Ethylene Glycol, which is known to the State of California to cause cancer, and Methanol, which is known to the State of California to cause birth defects or other reproductive harm. For more information go to [www.P65Warnings.ca.gov](http://www.P65Warnings.ca.gov)

\*\* Eosin ⚠️ WARNING: This product can expose you to chemicals including Methanol, which is known to the State of California to cause birth defects or other reproductive harm. For more information go to [www.P65Warnings.ca.gov](http://www.P65Warnings.ca.gov)

\*\*\*Differentiator ⚠️ WARNING: This product can expose you to chemicals including Methanol, which is known to the State of California to cause birth defects or other reproductive harm. For more information go to [www.P65Warnings.ca.gov](http://www.P65Warnings.ca.gov)

Image 2:

Intestinal tissue processed on Tissue-Tek® VIP 6 AI

Section stained with Tissue-Tek Prisma® H&E Stain Kit #1

Nuclei of the mucosa epithelium show well-defined nuclear membranes and chromatin patterns

Nucleoplasm appears both unstained and lightly stained

The Tissue-Tek Prisma® H&E Stain Kit #1 contains Hematoxylin in a Gills 2 formulation that can demonstrate acidic mucins, and an alcoholic Eosin Y formulation



## A long tradition of excellence

**Known for best-in-class automation and reliability Sakura Finetek remains a privately-held company in business since 1871. Sakura Finetek has achieved its success and solidified its reputation by providing timely, ingenious solutions to the real challenges laboratories face on a day-to-day basis.**

Our rich history has given us a thorough understanding of technology, quality, reliability, value for money and our customers' requirements. We use this knowledge to passionately develop products that anticipate developments in both technology and market needs.

Sakura Finetek USA, Inc. (SFA) is based in Torrance, California. Functions covered at this facility include sales and marketing, service and technical support, R&D, and manufacturing. SFA is an ISO 13485 certified manufacturer and supplier. As one of the two global manufacturing and R&D sites, SFA develops instruments and reagents into system solutions and secures our innovation with a steady stream of patents.

In addition to supporting the U.S. marketplace, SFA is also responsible for Canada, Mexico, Central and South

America and serves these markets with a network of local distributors.

With the worldwide headquarters in Japan and regional offices in Japan, The Netherlands and the U.S.A., the global strategy of worldwide representation has been fulfilled to guarantee our customers the best service and support.

Our organization is developing, professionalizing and growing continuously, and thus maintaining its position as a trustworthy and valuable partner in histopathology.

Please visit our website [www.sakuraus.com](http://www.sakuraus.com)

Sakura Finetek USA, Inc., 1750 West 214th Street  
Torrance, CA 90501 U.S.A.

